



SonoSite® **VET**
180PLUS hand-carried ultrasound

A P P L I C A T I O N S S U M M A R Y

Veterinary Applications

Imagine

Hand-carried, high performance color ultrasound for veterinary applications.

The SonoSite VET 180PLUS hand-carried ultrasound system delivers:

- True, go-anywhere portability – 5.4 pounds (2.4 kg), battery or AC powered
- All-digital, high-resolution imaging in 2D, Color Power Doppler, PowerMap™ Directional Color Power Doppler, Pulsed Wave Doppler, Tissue Harmonic Imaging, M-mode and ECG
- Wide range of lightweight transducers for a variety of veterinary exams and procedures
- Easy-to-learn, easy-to-use intuitive controls
- Fast boot-up – ready to scan in about 10 seconds
- Cine review

Imagine... A New Way of Using Ultrasound

- Take high resolution ultrasound anywhere
- Provide rapid imaging response
- Eliminate the transport of heavy cart-based ultrasound systems
- Get quick answers anytime, anywhere
- Broad range of clinical applications including: cardiac, abdominal, reproductive and tendons
- Own a portable solution for interventional procedures: line placements, paracentesis/thoracentesis, biopsies

Imagine... Improved Veterinary Care

- Expand services on site
- Rely on high resolution in a portable package
- Identify and treat problems earlier for better clinical management
- Provide fast, easy, imaging exams for animal physical assessment

Imagine... Sound Medical Economics

- Enhance your services with a low capital, low maintenance investment
- Reduce referrals for examinations



SonoSite® **VET** 180PLUS hand-carried ultrasound



S Y S T E M S P E C I F I C A T I O N S

System Configurations

- VET 180PLUS
 - Operates C60 (5-2 MHz), C11 (7-4 MHz), C15 (4-2 MHz) and L38 (10-5 MHz) transducers
 - 119 image storage

Imaging Modes

- 2D
- Zoom
- Narrow imaging sector
- Color Power Doppler
- PowerMap™ Directional Color Power Doppler
- Pulsed Wave Doppler (option)
- Tissue Harmonic Imaging (option)
- M-mode

Physical Characteristics

- Height: 13.3 in (33.8 cm)
- Width: 7.6 in (19.3 cm)
- Depth: 2.5 in (6.35 cm)
- Weight: 5.4 lb (2.4 kg) with one transducer attached

Transducers

- Lightweight with rapid, pinless connection
- C11/7-4: 11 mm broadband (7-4 MHz) curved array for cardiac, reproductive and general purpose abdominal applications for large and small animals
- C15/4-2: 15-mm broadband (4-2 MHz) array for cardiac, transthoracic and abdominal imaging
- L38/10-5: 38-mm broadband (10-5 MHz) linear array for ligaments, small parts, musculoskeletal, and vascular imaging. Biopsy guide available
- C60/5-2: 60-mm broadband (5-2 MHz) curved array for general-purpose applications

User Interface

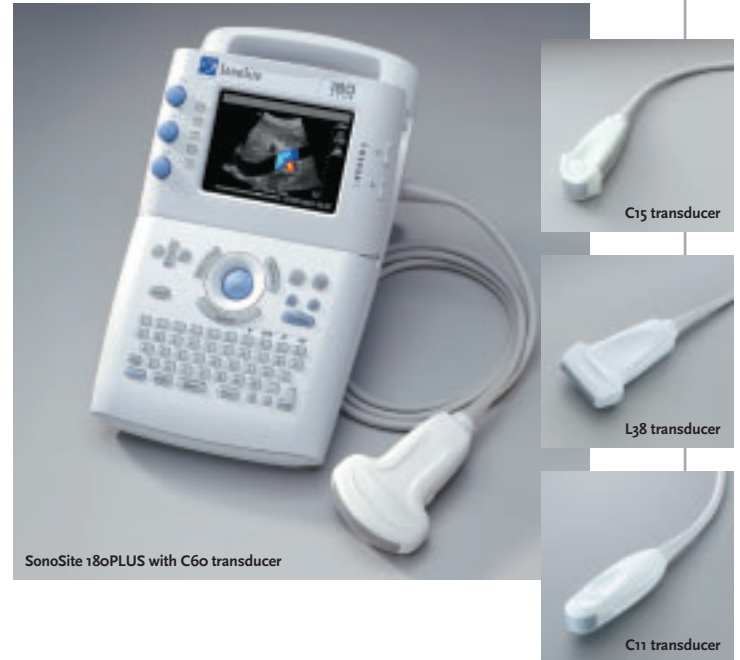
- Controls: 2D, Power Doppler, Pulsed Wave Doppler, M-mode, near gain, far gain, overall gain, save, print, freeze, cine review, text/picto, select, measure, optimize, depth, zoom, patient
- Narrow imaging sector feature on 2D, PowerMap and Pulsed Wave Doppler
- User-defined labels
- Integrated 5-in (12.7 cm) TFT color Liquid Crystal Display with brightness and contrast controls
- Integrated trackball for navigation
- Alpha-numeric keyboard

System Parameters

- System dynamic range: approximately 140 dB
- Frame rate: up to 100 frames/second

Image Storage and Cine

- Storage: internal memory for off-line printing and review
- Cine: image retained for frame-by-frame viewing
- Connect directly to a PC with SiteLink image manager software using a cable line from the system. Allows transfer of high resolution bitmap images



SonoSite 180PLUS with C60 transducer

Measurement Tools

- Distance calipers – two sets
- Ellipse for area and circumference measurements

Power

- Operates via battery or AC power – 1.5 to 4 hours on fully charged, new battery
- Battery: rechargeable lithium ion
- AC: via universal power adaptor, 100-240 VAC, 50-60 Hz

Display Annotation

- Text

Peripheral Connections

- Composite video output (NTSC/PAL) to videocassette recorder, video printer or external monitor
- Connect to PC via PC Direct cable, or via SiteStand™ mobile docking station to download high resolution bitmap images
- IO serial connector (ECG or PC Direct Connectivity)



SonoSite, Inc.
21919 30th Drive SE, Bothell, Washington USA 98021-3904
telephone: 1-425-951-1200 • toll free: 1-888-482-9449 • facsimile: 1-425-951-1201
www.sonosite.com